

2016 **ecos** Annual Report

The State of Chittenden County

Achieving our vision for a healthy, inclusive, and prosperous future

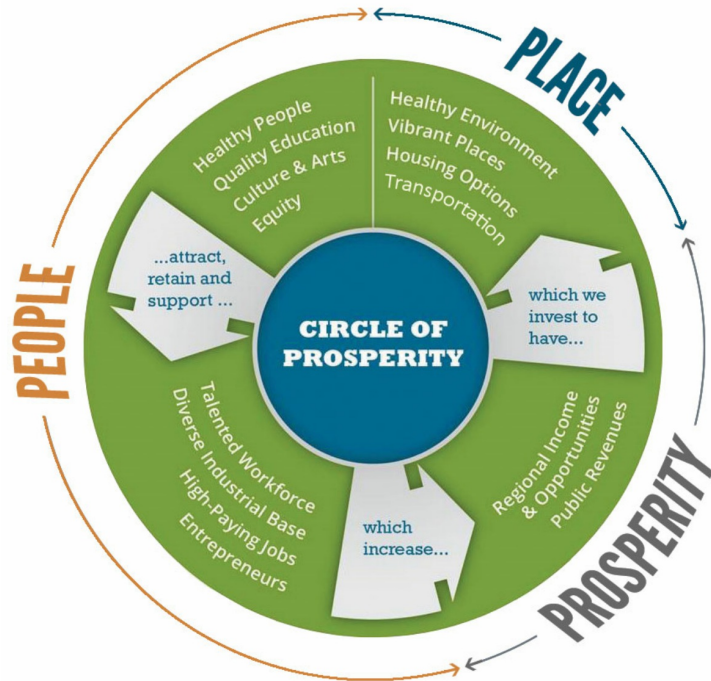


Prepared by CCRPC
on behalf of the
ECOS Partnership



INTRODUCTION & DEMOGRAPHICS

Four years since the adoption of the [ECOS Plan](#), the ECOS Partners remain invested in making progress toward accomplishing the plan's vision for a healthy, prosperous, and inclusive Chittenden County. The challenges we face are multi-faceted and often interrelated. We keep working to break down silos and ensure that our efforts are mutually supportive in achieving our goals. This interdependence is reflected in the Circle of Prosperity



Elements of the [ECOS Plan](#) are integrated into each partner organization's work plans, and the partners approach work differently as a result of implementing the principles of collective impact.

In an effort to monitor and build on successes, bring new information to the legislature and community leaders, and continue to work on areas that need improvement, the ECOS Partnership prepares this Annual Report and an online data Scorecard each year. These data-driven resources provide insight into current and future needs in Chittenden County, and allow us to focus on long-term solutions rather than just treating short-term symptoms.

In this report, the ECOS Partnership has selected a few key indicators from the ECOS Plan. They are not intended to be inclusive of all the goals; the full set of goals can be found in the [ECOS Scorecard](#).

Reporting Trends

Throughout this report, items communicating a trend will be marked with a green or red arrow. A green arrow indicates a trend in a positive direction, while a red arrow indicates a trend in a negative direction.



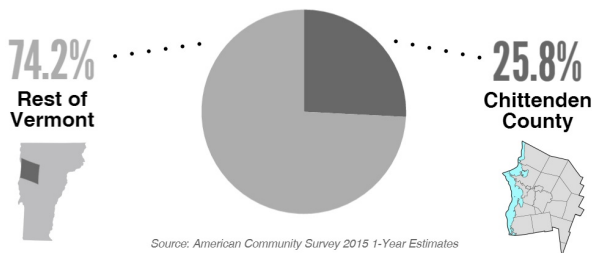
POPULATION



Chittenden County continues to grow.

Chittenden County grew from 156,705 in 2010 to 161,382 in 2015 and makes up over a quarter of Vermont's overall population. While Chittenden County is growing, Vermont's annual growth rate has been -.1% over the past 10 years.

Chittenden County Population Within Vermont



WORKFORCE

Workforce and children populations have decreased, while senior and retiree populations have increased.

The low and declining population of 25-44-year-olds may produce a shortage of the young people needed to replace retiring workers. Population trends indicate this will worsen due to low birthrates and the out-migration of young adults.

Workforce & Children Populations



5,729 decrease 2005-2015

Senior & Retiree Populations



5,314 increase 2005-2015

Source: 2015 American Community Survey 2010, 2015 1-Year Estimates

DIVERSITY



We are growing increasingly more diverse.

Of the additional 4,677 people from 2010-2015, 3,987 are non-white and Hispanic, accounting for **85%** of the population growth in the last five years.

Source: 2015 American Community Survey 2010, 2015 1-Year Estimates

Methods to counteract this trend include sustained efforts to address housing affordability, childcare affordability, new job development and social/quality of life amenities to attract and retain our workforce – particularly recent in- and out-of-state graduates.

PEOPLE

Education | Health | Housing



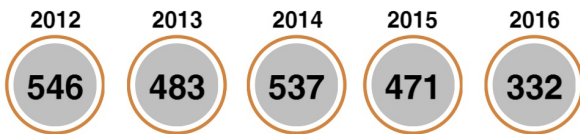
HOMELESSNESS



The 2016 homeless Annual Point-in-Time Count decreased significantly, however homeless families have remained steady.

This decrease is a direct result of the Homeless Alliance and partners' efforts, including the "Housing is Health Care" approach to address chronic homelessness.

Number of Homeless Individuals



Source: Point-in-Time Count - Burlington Continuum of Care Report & UW Chittenden County

OPIOID CRISIS

Chittenden County is taking a cross-sector approach to addressing the opioid crisis.

An alliance of 50+ committed partners began working together to reduce the burden of the opioid crisis, as this issue cannot be addressed by any one individual group or organization.



HEALTH

A change in only three behaviors can have a major influence on the health of Vermonters.

Many efforts are underway to keep Vermonters healthy from the start, to prevent chronic disease and lower health care costs. These include the Vermont Department of Health's 3-4-50 campaign, the all payer model, and businesses focused on prevention -- such as BioTek Instruments of Winooski.



In Chittenden County:

39% Do NOT get the Recommended Physical Activity	6% Diagnosed w/ Cancer	24% Deaths from Cancer
76% Do NOT Eat 5 Servings of Fruits & Vegetables Per Day	6% Diagnosed w/ Cardiovascular Diseases	20% Deaths from Cardiovascular Diseases
15% Currently Smoke	11% Diagnosed with Diabetes or Pre-Diabetes	3% Deaths from Diabetes
	14% Diagnosed with Lung Disease	7% Deaths from Lung Diseases
		= 54% of Total Deaths

Source: Vermont Department of Health



Low-income students are those who receive free and reduced lunch. 377 out of 1,491 students who took the proficiency test are considered low-income.

For comparison to the chart below, 73% of non low-income third graders were proficient.

Low-Income Third Graders Proficient in Reading

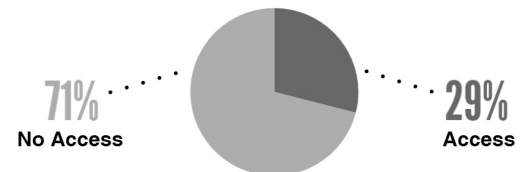


Source: 2015-2016 School Year, Smarter Balanced Assessment Vermont Agency of Education



The challenge starts even earlier: 71% of infants and toddlers likely to need care in Chittenden County do not have access to high quality programs, placing them at an early disadvantage.

Infants & Toddlers with Access to Quality Child Care



Source: Let's Grow Kids, 2015

HERE'S
WHAT YOU
CAN DO!



Start a conversation with your kids about substance abuse.

Watch video tips from Vermont parents at parentupvt.org.



Create a healthy workplace!

Use the Vermont Worksite Wellness Resource to get started: healthvermont.gov/local-health-offices/burlington/worksite-wellness

PLACE

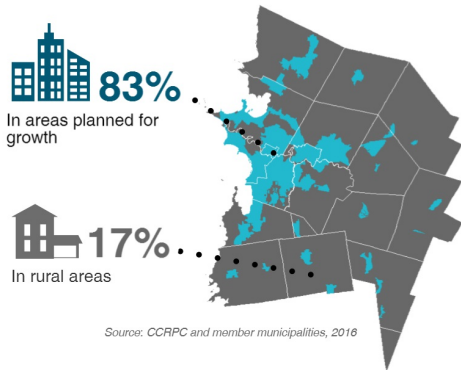
Housing | Transportation | Energy | Environment

SMART GROWTH

We've continued to invest in the centers of our communities.

While development in existing communities can be difficult, infill in the right places will have lasting positive benefits of increased inclusivity and strength to our economy. The goal for 80% of new development to occur in areas planned for growth has been met for the fifth year in a row.

Homes Built in Chittenden County Since 2010



Homes Built in Chittenden County in 2015: 658
Building Homes Together Goal: 700/year

HOUSING



We still need to build more homes.

More homes will increase the rental vacancy rate, reduce the number of cost-burdened households, provide housing within the county near transportation choices for our employees, and increase vibrancy of our downtowns and villages. The [Building Homes Together](#) campaign aims to do just that.

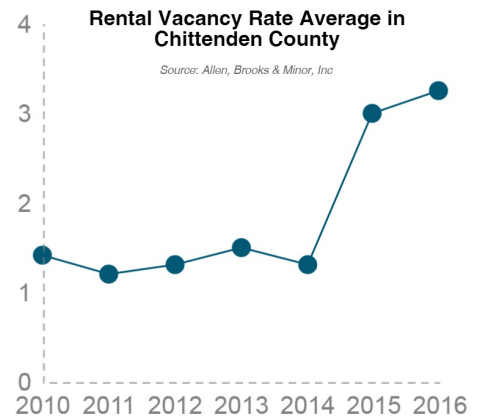


Some quick housing facts:

County-wide average vacancy rate in 2016 was 3.25%

Since 2000, the annual long-term vacancy rate is 1.7% - a healthy rate is 3-5%

New housing units still fill extremely quickly



CLEAN WATER

We are "all in" on a healthy Lake Champlain, and urge the most cost-effective clean-up.

We are faced with a \$2.5 billion Lake Champlain phosphorus clean-up cost over the next 20 years, and there is currently a \$68 million gap in funds. While raising those funds is a daunting task, it is important to understand the vast economic value of the lake. A long-term revenue is needed. Multiple efforts are underway to address the complex solutions required, such as the [State Treasurer's Clean Water Report](#) and the [Vermont Clean Water Network](#).



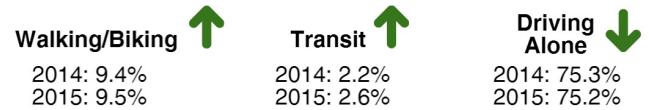
TRAVEL MODES



More of us are getting out of our cars.

The goal is to reduce single occupant vehicle travel and increase – through targeted investment in active transportation facilities and transit services – walking, biking and transit trips.

All three modes are moving in the right direction.



Source: American Community Survey 2015 1-Year Estimates



Act 174 Was Passed by the Vermont Legislature

Municipalities that re-write their town plans in accordance with the state's new energy siting law would have more of a say over renewable energy projects.

ENERGY



The Vermont Community Energy Dashboard Was Launched

Designed to help translate Vermont's goal of 90% by 2050 into achievable local action, the [Dashboard](#) contains critical energy information across all energy sectors – efficiency, heat, electricity and transportation – tailored to each and every community in VT.

HERE'S
WHAT YOU
CAN DO!



Capture rain on your property to prevent stormwater runoff.

Visit SmartWaterways.org for more information.



Make your commute more fun!

Visit GoVermont.org for more information.

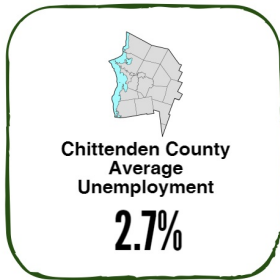
PROSPERITY

Employment | Income | Housing

UNEMPLOYMENT



Unemployment in Chittenden County is well below the US average.



Unemployment in Chittenden County is around 2.7% (2015) pointing to a challenging labor market for employers.

While a low unemployment rate is good from one respect, it is also an indicator of our declining workforce due to an aging population, low birth rates and the out-migration of young adults.

Source: Vermont Department of Labor, Economic & Labor Market Information

NEW JOBS

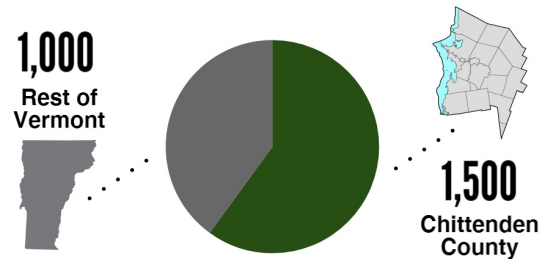


We've seen 1,500 new jobs.

Since 2014, Chittenden County has seen an increase of 1,500 new jobs, which is 60% of the 2,500 new jobs added in the State (total covered employment). However, this growth is relatively flat as it equates to only 1.5% of the total jobs in the county.

We need to continue to prepare an educated workforce, and support business growth, through successes like the Vermont Center for Emerging Technologies—a collaborative effort that launches successful business ideas and creates jobs.

Chittenden County's Share of 2,500 Total New Jobs



Source: Vermont Department of Labor, Economic & Labor Market Information

WORKFORCE



Based on work from the Vermont Futures Project, we estimate a workforce gap of around 3,500+/year.

New Americans are a growing sector of our population and are helping to meet some of our workforce needs.

The Working Bridges program can help businesses train and retain these workers, just as TwinCraft has done.

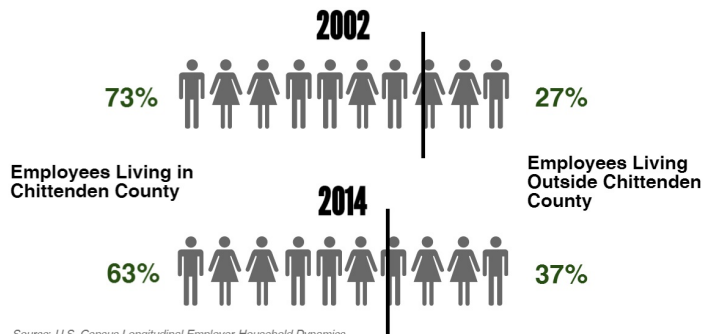
Source: Vermont Futures Project

RESIDENCY



More county employees are not living here.

While the number of jobs has remained relatively steady in Chittenden County, there are 7,329 fewer workers living here now than in 2002. This is likely an indication of a lack of available, affordable homes within the county.



Source: U.S. Census Longitudinal Employer-Household Dynamics

HERE'S
WHAT YOU
CAN DO!

Know which careers show the most promise.



Visit Pathways to Promising Careers to review 54 high-pay, high-demand jobs projected for Vermont: mclurevt.org/pathways



Learn about programs and resources that can help your business and employees.

Working Bridges, a public-private, multi-sector employer collaborative seeks business solutions for job retention and decreased absenteeism and uses the workplace as a platform for social services: unitedwaynwvt.org/Working-Bridges



Environment. Community. Opportunity. Sustainability.

..... ecosproject.com

Visit the ECOS Scorecard to view all the indicators
measuring progress toward the ECOS Plan goals.