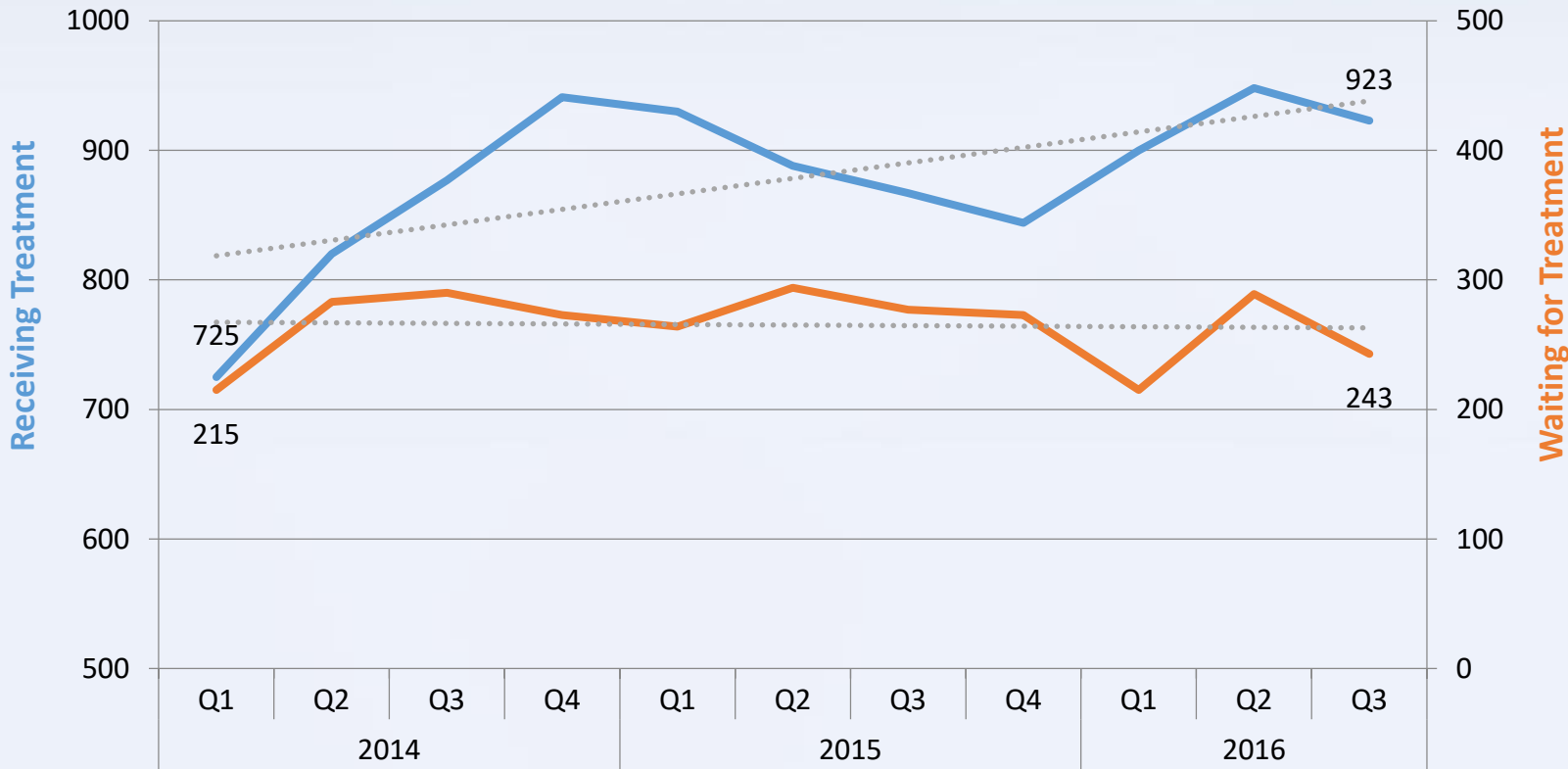


# Chittenden County Waitlist Versus Hub Capacity

**Chittenden Clinic Average Quarterly Treatment & Waitlist Volume**



What do we know:

- Details specific to the Chittenden Center
- State totals, broken into county level data
- Transfers from Hub to Spokes and vice versa

What do we need to know:

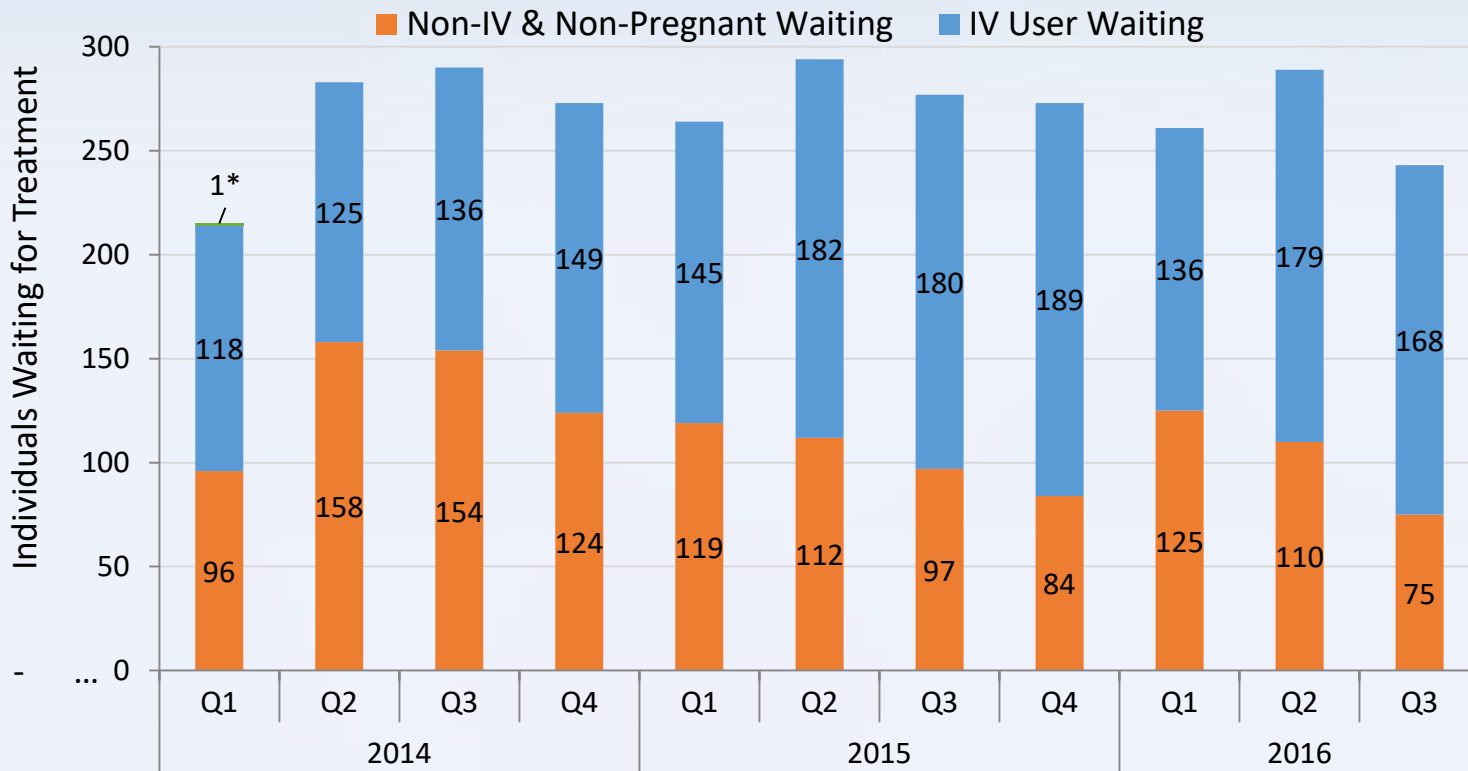
- Re-entry rates of those leaving treatment prematurely
  - Time until treatment resumed
  - Rate of attrition

Where do we go from here:

- Uniquely identify records without relying on personal identifiers
  - Name
  - Social Security Number
- Use unique key to track effects of initiatives at hub level

# Triage Categories of Individuals Awaiting Treatment

## Chittenden Clinic Average Quarterly Waitlist Composition



### What do we know:

- Demographic information of those applying for treatment
  - Age, gender, region
- Treatment Needs Questionnaire (TNQ) information
  - Social support structure
  - Economic Stability

### What do we need to know:

- Verify all agencies contributing to wrap-around services

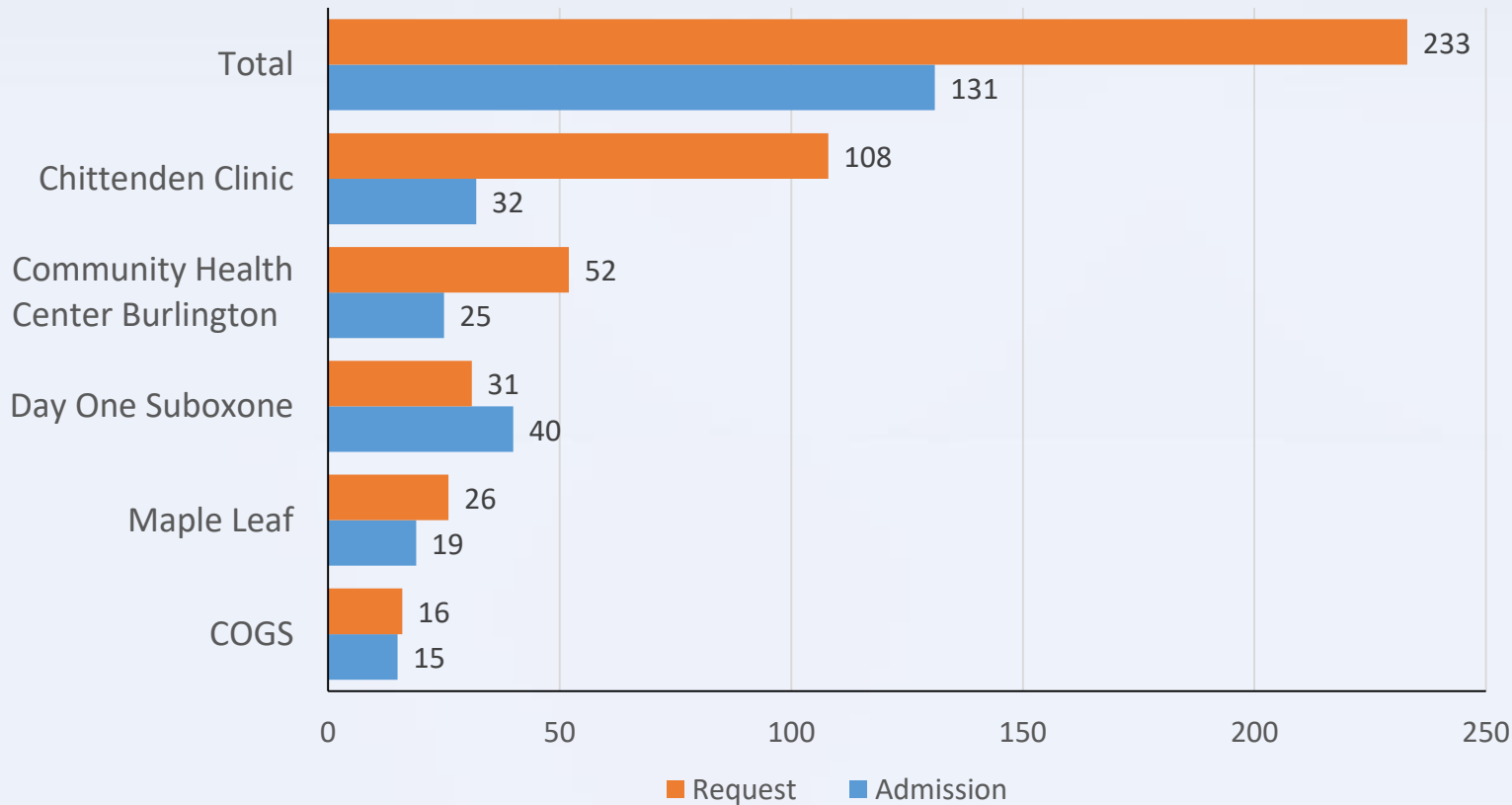
### Where do we go from here:

- At highest level of privacy, standardize unique keys for de-identified records across multiple agencies
- Establish MOUs for data sharing across agencies

\* Q1 of 2014 had 1 total instance of a pregnant individual waiting for treatment

# Quarterly Admission Levels of Service Providers

Chittenden County Triage Team Requests for Service & Admissions  
2<sup>nd</sup> Quarter 2016



## What do we know:

- Admission, request, days until first service, TNQ scores when applicable
- Similar information from other preferred providers: Lund OP, Act1, Centerpoint, Spectrum, Pine St. Counseling, ...

## What do we need to know:

- Waitlist figures when applicable
- Interagency transfer of care, tracking when care is interrupted
- Comprehensive estimate of requests for service county-wide

## Where do we go from here:

- Establish MOU for de-duplicating requests across multiple providers
- Standardize metrics tracked across different kinds of service

- How are we doing with \_\_\_\_ compared to other counties?
- Do we have that at a county level?
- What happens to patients after they leave \_\_\_\_?
- Where did you find that information?
- What other recovery supports are available and what is their capacity?
- Is there capacity with PCP's who practice in private, to alleviate the waitlist?
- How do we define waitlist and average wait time for service?